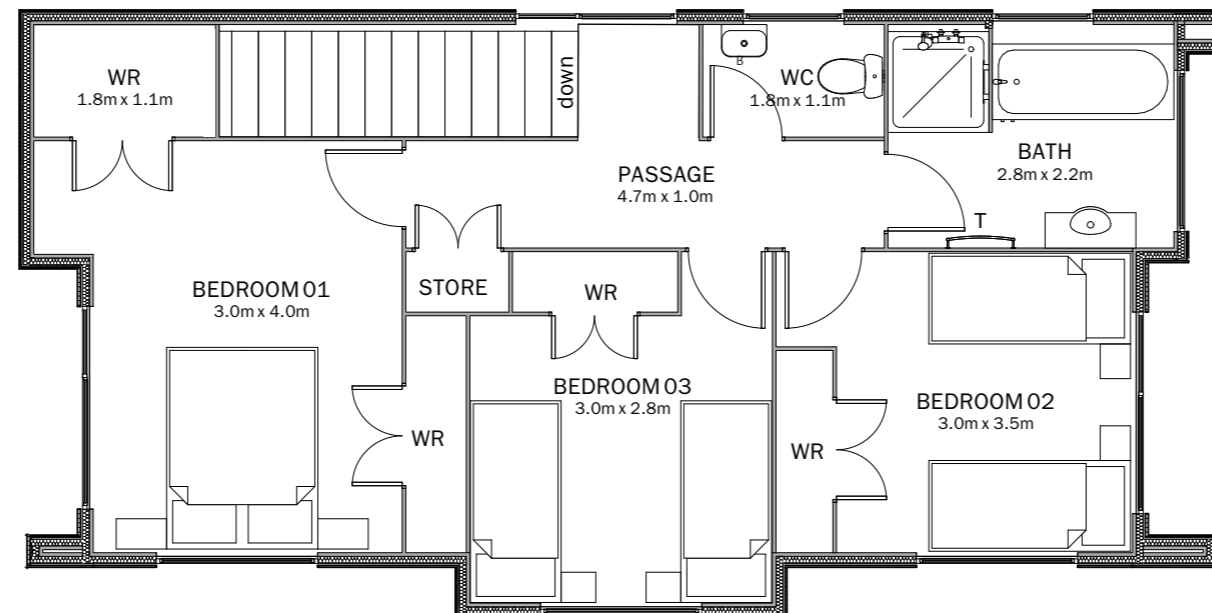


**GROUND
FLOOR
PLAN**

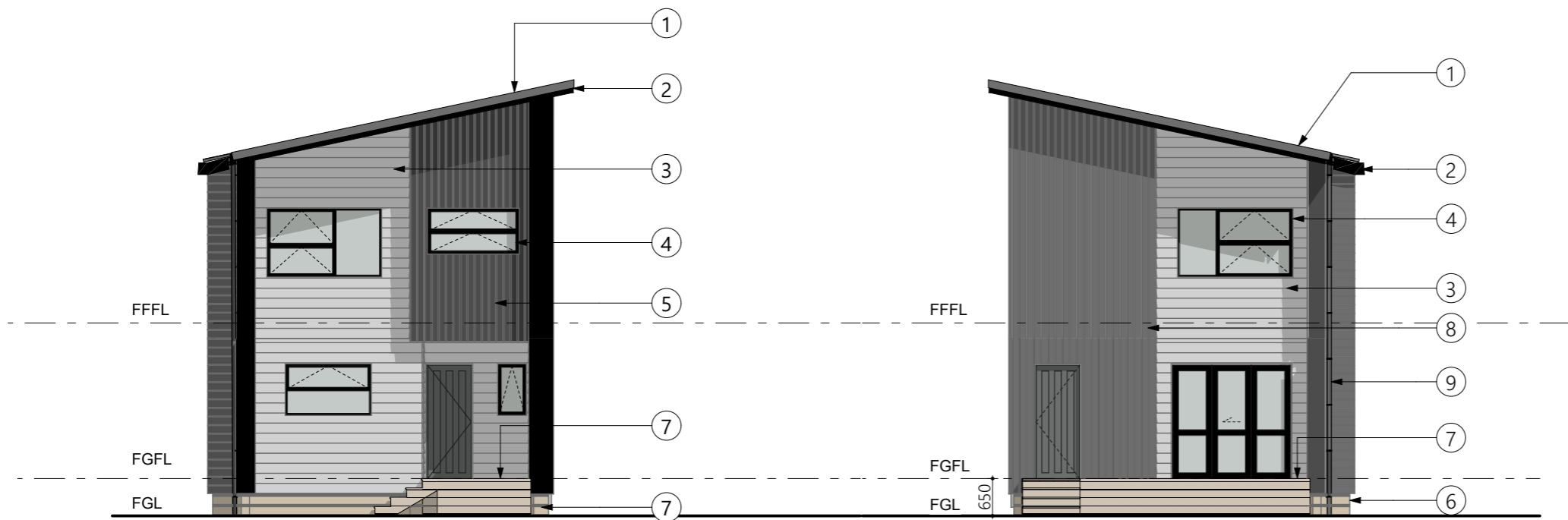


**FIRST
FLOOR
PLAN**

121 sqm
3 BEDROOM
2 STOREY
(STANDALONE)

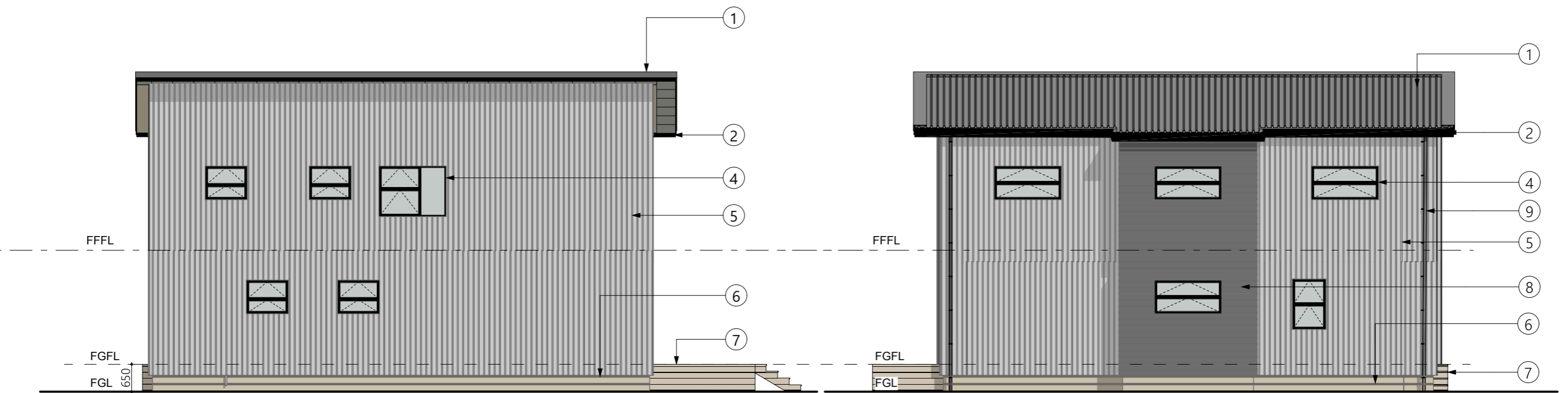
ELEVATION KEY

- ① TRAPEZOIZAL PROFILE METAL ROOF CLADDING
MIN BMT 0.40mm
- ② 185mm PROFILED METAL FASCIA &
QUATER ROUND GUTTERING
- ③ DIRECT FIXED PALLISDE WEATHERBOARD
CLADDING
- ④ POWDERCOATED ALUMINIUM FRAMED DOUBLE
GLAZED WINDOWS WITH SOLUXE GLASS
(R0.37), COLOUR SELECTED BY OWNER.
OBSCURE SAFETY GLASS TO WET AREAS
- ⑤ WEATHERTEX 200mm PRIMELOCK SMOOTH
ON 20mm DRAINED CAVITY WITH CAVITY
CLOSE
- ⑥ BASE BOARDS (NOT INCLUDED)
- ⑦ DECK/STAIR & CANOPY OVER (NOT INCLUDED)
- ⑧ WEATHERTEX 150mm PRIMELOCK SMOOTH
DARK STAINED ON 20mm DRAINED CAVITY
WITH CAVITY CLOSE
- ⑨ 80mm dia. PVC DOWNPIPE



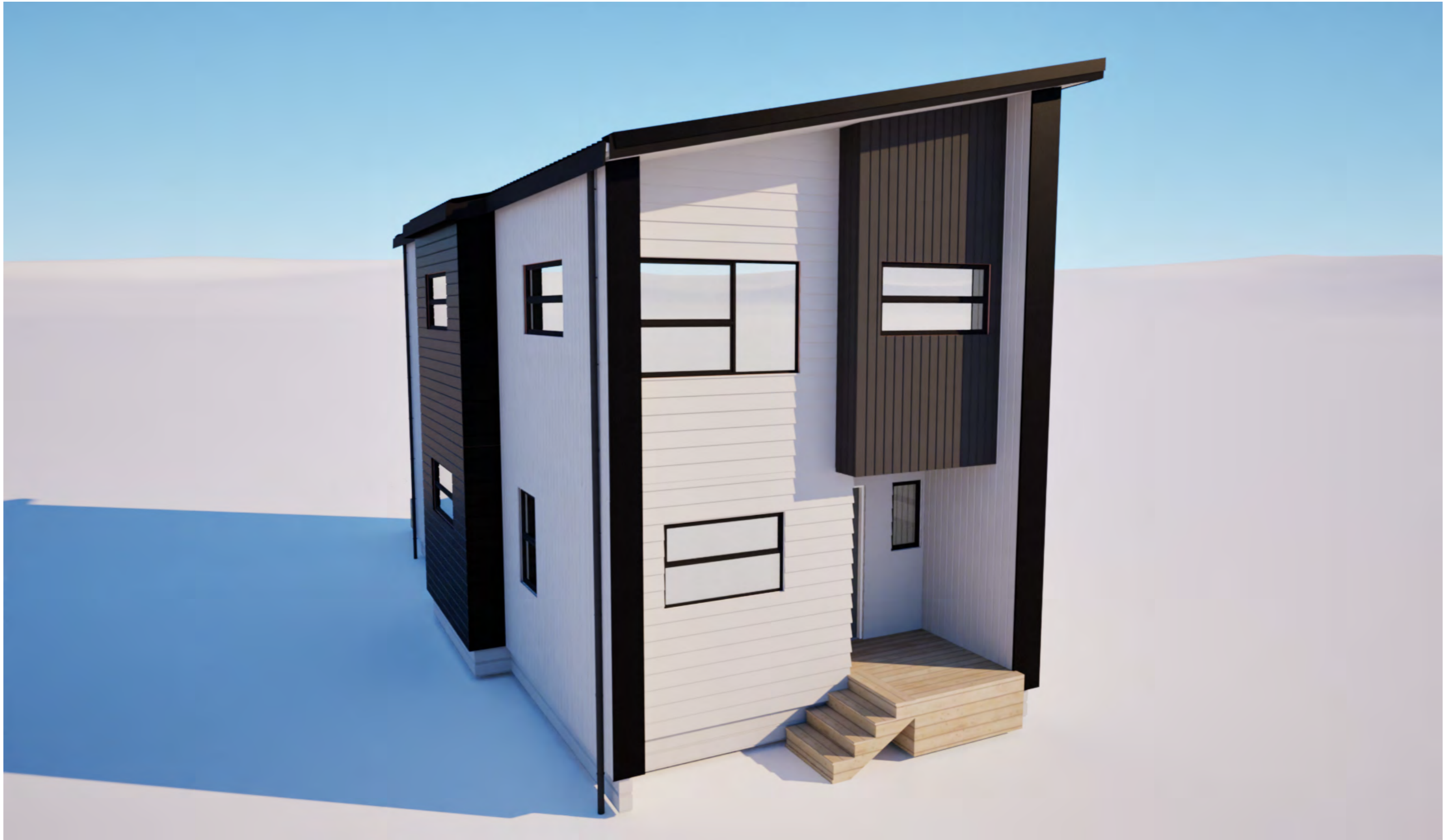
ELEVATION 1

ELEVATION 2



ELEVATION 3

ELEVATION 4



BUILTsmart®
TRANSPORTABLE BUILDINGS