

BUILTsmart[®]

TRANSPORTABLE BUILDINGS



Discover your new
BUILTsmart[®] home



BUILTsmart[®] is a genuine New Zealand family-owned and operated business constantly looking at ways to improve while never compromising on quality.

We take pride in delivering excellent customer service, professional workmanship with a strong commitment to quality, and completing contracts on time and within budget.

Our philosophy is to provide affordable building solutions with no compromise on quality so our clients receive the best results possible.



Based in Huntly, Waikato since 1982, we're a New Zealand family-owned business operating throughout the greater North Island for over 40 years.

Why **BUILT**smart® Transportable Homes?



BUILT affordable

We have designed a choice of five transportable home floor plans with great specifications aimed at providing you with the most cost-effective building options available.

BUILT to completion

All homes are built to completion—you can view and purchase your new home in our factory and we'll organise it to be transported to your site. If we don't have a completed home ready to transport at the time of your order, an estimated date of completion will be provided.

BUILT better

BUILTsmart transportable homes come with kitchens that are constructed with durable New Zealand-made materials and modern clean lines. Quality branded appliances are installed and ready to go as a part of our complete package.

BUILT to transport

BUILTsmart homes are pre-built in Huntly, Feilding, Gisborne, and transported throughout the North Island of New Zealand. Transport costs and installation varies between building sites, so is not included in the house price. We can provide a quote for this once we have the required information.

BUILT to last

The BRANZ accredited floor, wall, and ceiling system we use in our transportable homes is unique. The wall and ceiling panels are 2.4m x 7.2m long, which create the structural and bracing elements. BUILTsmart transportable homes exceed the New Zealand Building Code for earthquake resistance.



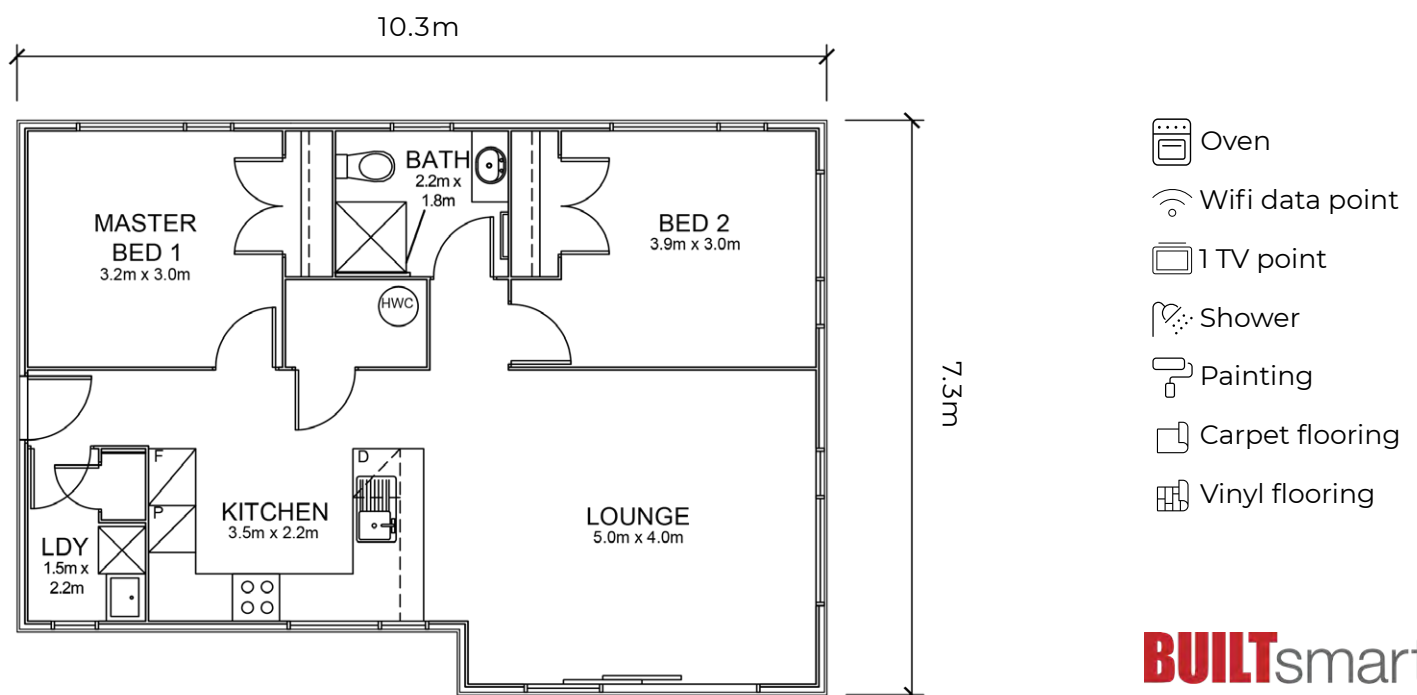
2 BEDROOM 69sqm

Rejoice in an easy-care lifestyle in this high quality, two-bedroom transportable home.



The modern open-plan dining, lounge and kitchen with adjoining laundry will give you plenty of space to enjoy.

Two double bedrooms and a well-placed bathroom complete the interior, maximising privacy in your cosy new home. Quality direct-fixed Pallside weatherboard cladding will stand the test of time, keeping you and your family warm and comfortable. With a unique frontage and entry this attractive home will look great on your site.



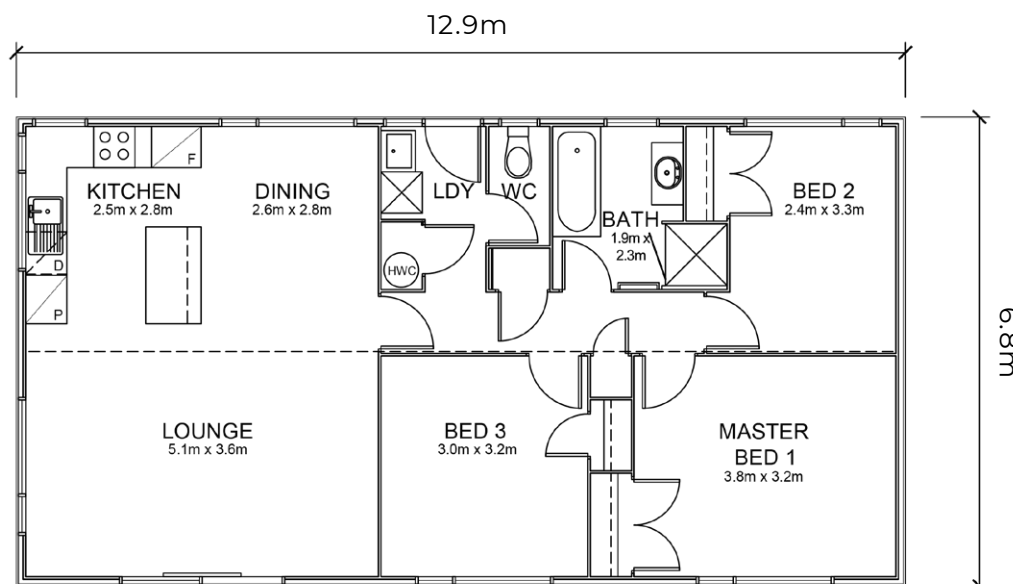
3 BEDROOM 86sqm

Step inside this affordable three bedroom home and you'll be impressed with the use of space, with each area maximised for your comfort.



Experience open-plan living at its finest and see how this compact design is built for your lifestyle with three spacious bedrooms and well-positioned bathroom for convenient living. The modern kitchen has been designed with style and function in mind—your family will love eating around the breakfast bar in the mornings, and you'll love the extra bench space.

Clad with quality direct-fixed Palliside weatherboard that will stand the test of time, you will love this home inside and out.



- Oven
- Wifi data point
- 1 TV point
- Bathtub
- Shower
- Painting
- Carpet flooring
- Vinyl flooring

BUILTsmart®

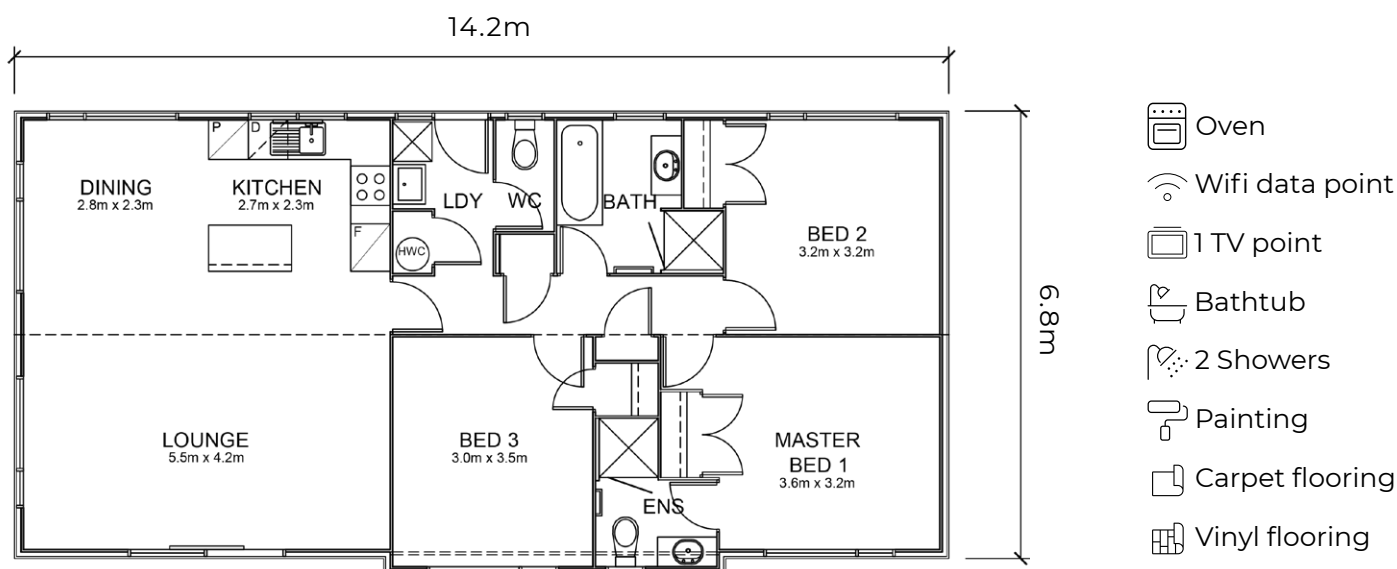
3 BEDROOM 97sqm

You will love the modern conveniences we have included in this three bedroom home. The open plan living areas have been designed with your comfort in mind.



The spacious master bedroom boasts a handy en-suite, while the main bathroom has a separate shower and bath. The kitchen is waiting to be cooked in, with high-quality appliances and a breakfast bar for added bench and dining space.

This home looks great from the outside too, clad with premium direct-fixed Palliside weatherboard to keep your family warm and dry.

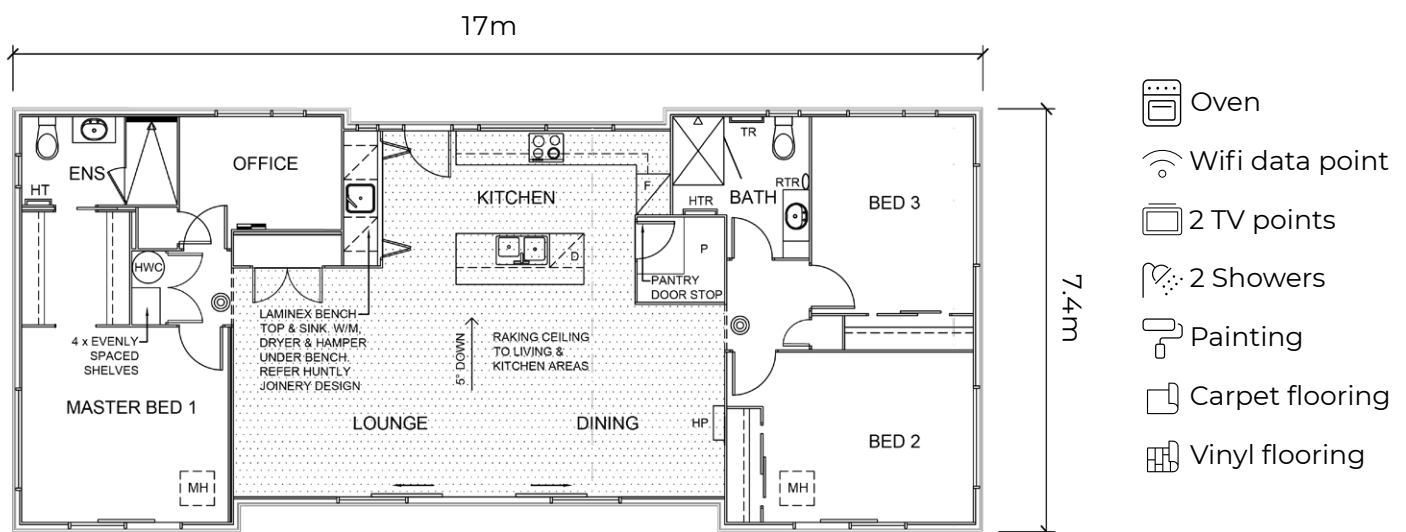


3 BEDROOM 117sqm

Welcome to a luxury transportable home with space for the whole family. This three bedroom home has been designed with exceptional quality specifications.



Your stylish new kitchen is full of modern conveniences—great appliances, a functional breakfast island and, the best part? A walk-in pantry. Enjoy peace and privacy with the master bedroom and en-suite at one end of the home, and two spacious bedrooms and a generous full bathroom at the other. Double sliding doors on both sides of the open-plan living area creates indoor/outdoor flow. Savvy owners will build a deck for substantial outdoor entertainment zones.

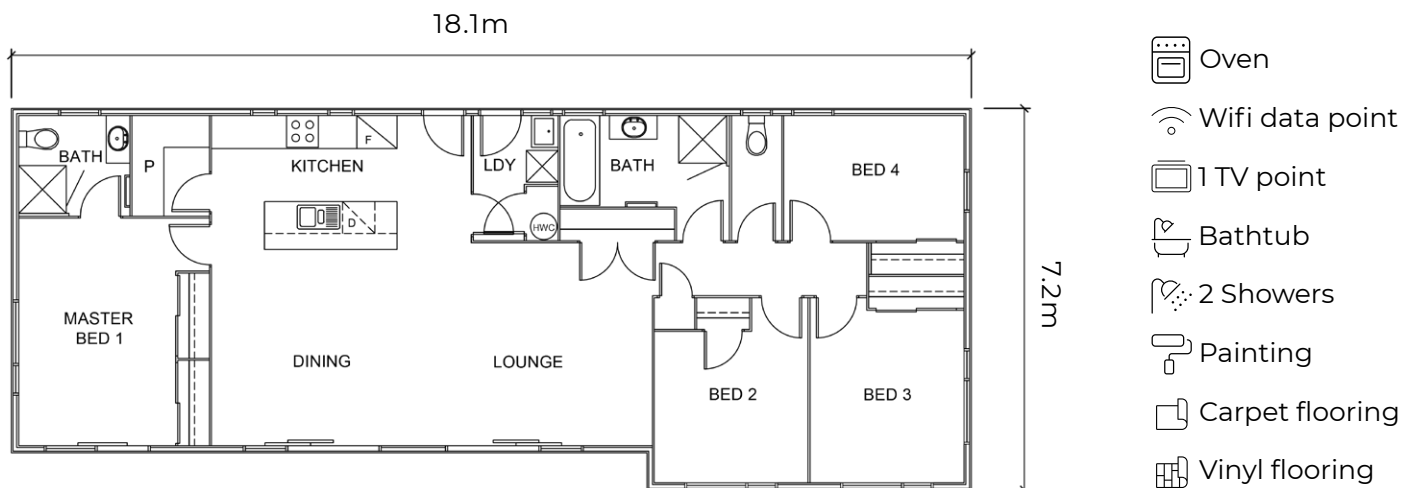


4 BEDROOM 122sqm

Welcome to the biggest plan of the range, this home offers both comfort and functionality. Open plan and great indoor/outdoor flow.



This well-designed residence features four spacious bedrooms and two modern bathrooms, making it ideal for families or those who appreciate ample space. The open layout seamlessly connects the living room, dining area, and kitchen, creating a warm and inviting atmosphere for gatherings and everyday living. Large windows fill the home with natural light, highlighting the tasteful finishes and thoughtful details throughout. With a balance of style and practicality, this home provides a cosy haven for you and your loved ones.



BUILTsmart® Frequently Asked Questions

What's included in the house price?

All finishing lines such as the door hardware, mirrors, towel rails, toilet roll holders, shelving, plumbing, and electrical fittings are included. Laundry unit, bathroom vanity, shower, and kitchen with cooking appliances are supplied and fitted. The interior is fully painted and carpets and vinyl fully installed. Ex-yard permit and code compliance are included.

Can I make any customisations?

Due to the demand for quick, efficient, and affordable builds, we do not offer the flexibility to make any customisations or design changes to our standard floor plans.

Are transport and foundations included in the house price?

The costs for transport and foundations are site specific, therefore not included in the house price. These costs are determined during estimate stage and upon investigation of the Geotech report. For initial enquiries, we can provide indicative costs for transport and foundations.

How long does it take to build a house?

Once the consent has been issued, our construction time is generally 6-10 weeks.

Do you organise the building consents?

Our homes come with a building consent for the house itself, however an on-site consent is required from the local council in the region the house is being moved to. This is necessary to demonstrate compliance with local town planning, building regulations, and other applicable rules. We can organise the on-site consent where required and have a dedicated person who specialises in on-site consent applications.

Do I need to make an appointment?

If you have a site already and you're ready to explore the possibility of a transportable home, your next step is to make an appointment with a knowledgeable representative to help guide you through the process. As our factory is a construction site, all visitors must follow our Health & Safety policies and procedures. i.e. wear appropriate footwear and clothing. Children under the age of 16 years are not permitted in our factory.

Do I need my own contractors for any stage of the project?

You will need a builder for decks, steps, and on-site building work, a plumber to connect the house to water, storm water, and waste water systems, and an electrician to connect your new home to mains power.

What sort of guarantees do you offer?

BUILTsmart provides product guarantees for all materials and items used in the construction of the home. In accordance with the Building Act, we provide a 10 year workmanship guarantee.

What deposit is required and how are payments structured?

A 10% deposit is required on signing of the building contract with progress payments based on stages of works completed.

Purchasing a Completed Stock Home?

When purchasing a completed BUILTsmart transportable home from any one of our factories we will require a one-off payment in full before it leaves the yard. Terms and conditions apply.

BUILTsmart[®] Transport Division

At **BUILTsmart**[®] we are not just revolutionising the way homes are built; we're transforming the entire process, from construction to delivery. We stand by our unwavering commitment to innovation and customer satisfaction.

With over 40 years of experience in the construction and housing industry, we bring a wealth of expertise to every aspect of the process. Our skilled drivers and transport professionals ensure that your home's journey is in the best hands possible.

From the initial design and construction to the final delivery, we offer a comprehensive and seamless service. We manage every step of the process to ensure that your home is delivered on time and with the utmost care.



TRANSPORT AND DELIVERY

The project manager, in conjunction with the transport team, will determine and confirm a transport date for the house. This allows for proper planning and scheduling of the necessary resources and equipment to ensure successful delivery.

Additionally, transit insurance is included in the Building Contract. Transit insurance provides an added layer of protection and peace of mind during the transportation process.

Quality from start to finish

BUILTsmart® Transportable Buildings



HUNTLY – HEAD OFFICE

494 Great South Rd
PO Box 286
Huntly 3740
Waikato
Ph: 07 828 9285



FEILDING

125C Kawakawa Rd
Feilding 4775
Manawatu



GISBORNE

Aerodrome Rd
Gisborne



PHILIP LEATHER
DIRECTOR



CAMERON BEVERLAND
GENERAL MANAGER



AIMEE SCOTT
CONSTRUCTION MANAGER

BUILTsmart[®]

TRANSPORTABLE BUILDINGS



 Made in
New Zealand